

Lenovo ThinkSmart Core with EPOS EXPAND Capture 5

- EN Quick Start Guide
- FR Guide de démarrage rapide
- DE Schnellstartanleitung
- ES Guía de inicio rápido
- IT Breve guida di preparazione

Additional Documentation

- Documentation complémentaire
- Zusätzliche Dokumentation
- Documentación complementaria
- Schemi dei cavi per sala riunioni



EPOS EXPAND Capture 5
Support Page
Page de support
Support-Seite
Página de soporte
Pagina di supporto

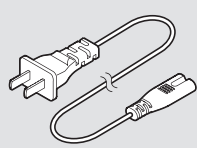
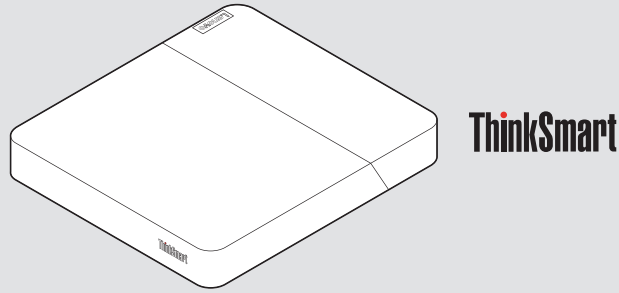
Lenovo ThinkSmart Core
Setup Guide
Guide de configuration
Setup-Anleitung
Guía de configuración
Guida alla configurazione

Lenovo ThinkSmart Core
Deployment Guide (MTR)
Guide de déploiement Lenovo (MTR/SMT)
Bereitstellungs-Anleitung (MTR)
Guía de implementación (SMT)
Guida all'implementazione (MTR)

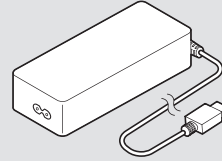
DSEA A/S
Kongebakken 9, DK-2765 Smørum, Denmark
eposaudio.com

Publ. 08/22, A01

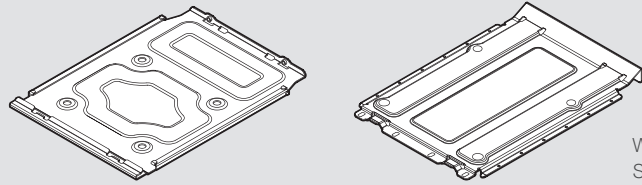
Lenovo ThinkSmart Core



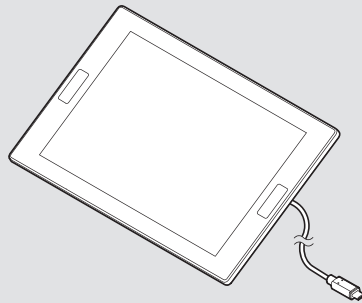
Power Cord
Câble d'alimentation
Netzanschlusskabel
Cable de alimentación
Cavo di rete



Power Adapter
Adaptateur secteur
Netzadapter
Adaptador de alimentación
Alimentatore di rete

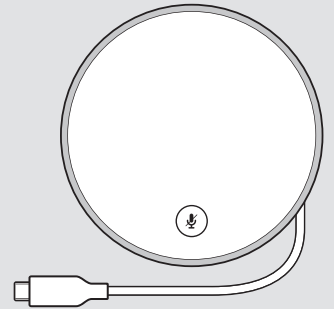


Wall Mount
Support de montage mural
Wandhalterung
Soporte mural
Montaggio a parete

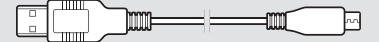


Lenovo ThinkSmart Controller
Contrôleur Lenovo ThinkSmart
Lenovo ThinkSmart Controller
Controlador Lenovo ThinkSmart
Lenovo ThinkSmart Controller

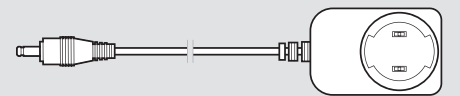
EPOS EXPAND Capture 5



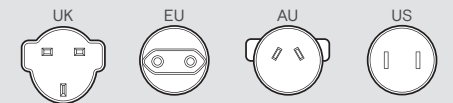
Power/Data Box
Boîtier d'alimentation/Data Box
Power/Data-Box
Caja de alimentación y datos
Scatola di alimentazione/dati



USB-A to USB-C® Cable
Adaptateur USB-A vers USB-C®
USB-A- auf USB-C®-Kabel
Cable USB-A a USB-C®
Cavo da USB-A a USB-C®

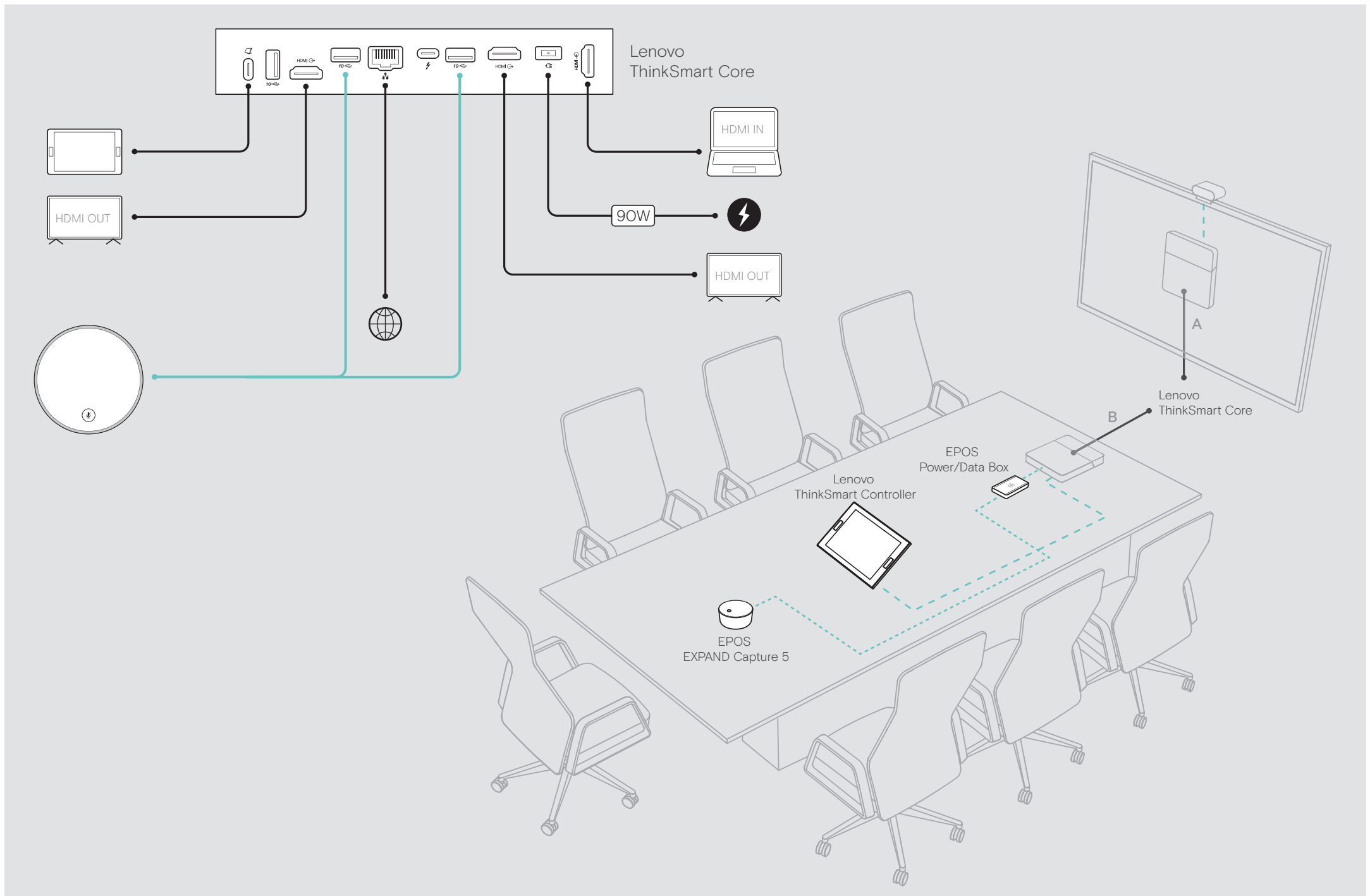


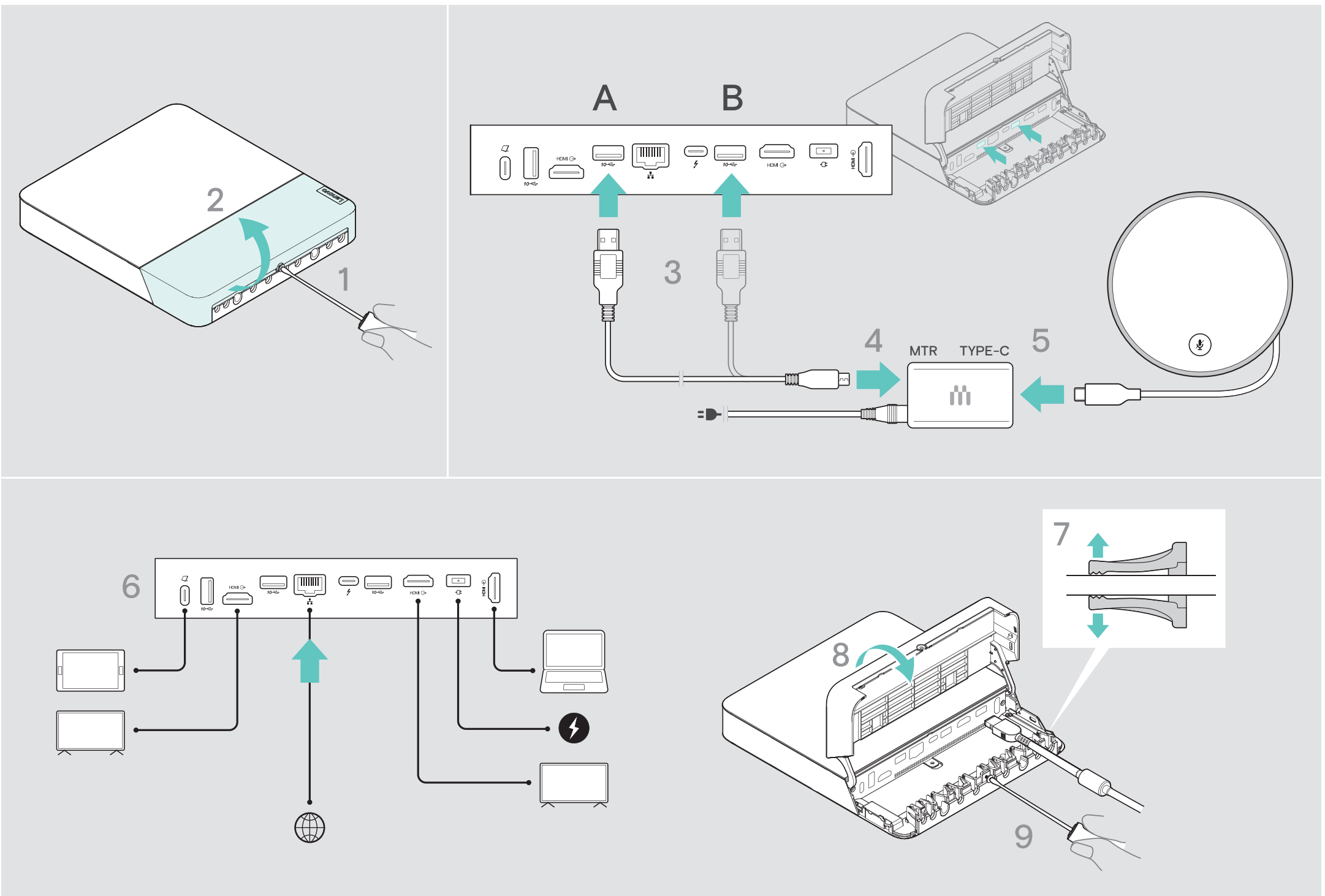
Power Adapter
Adaptateur secteur
Steckernetzteil
Adaptador de alimentación
Alimentatore di rete



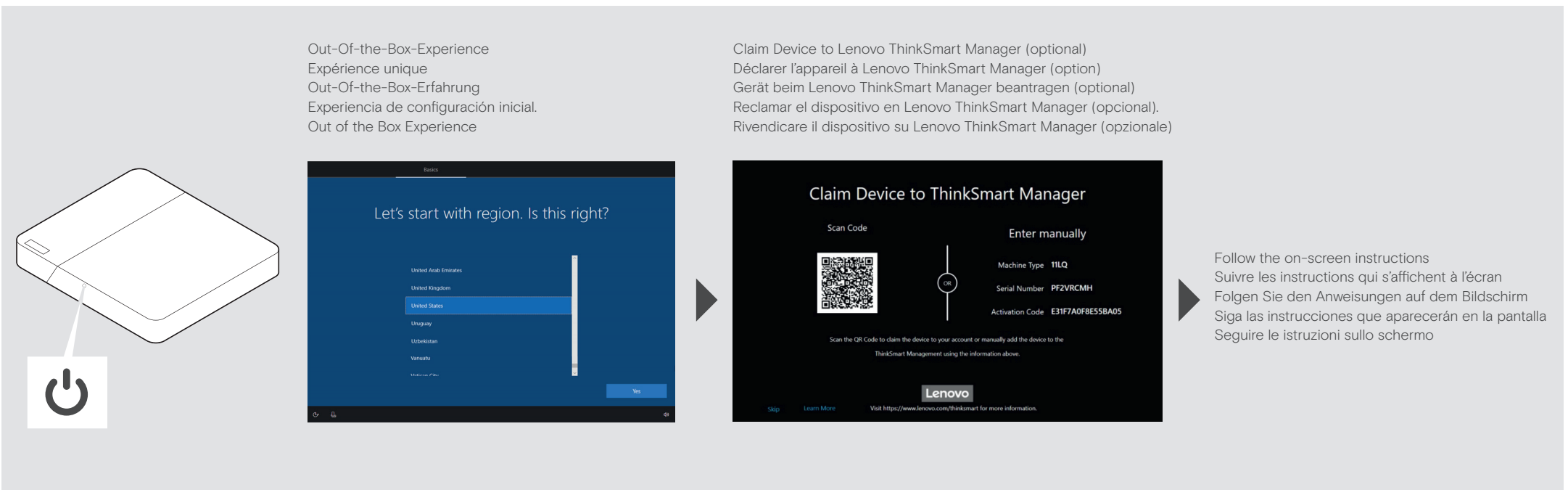
Power Plugs
Fiches secteur
Netzadapter
Enchufes
Spine di rete

Meeting Room Cable Schematics | Schémas de câblage de la salle de réunion | Kabelpläne für Besprechungsräume | Cableados válidos de una sala de reuniones | Schemi dei cavi per sala riunioni

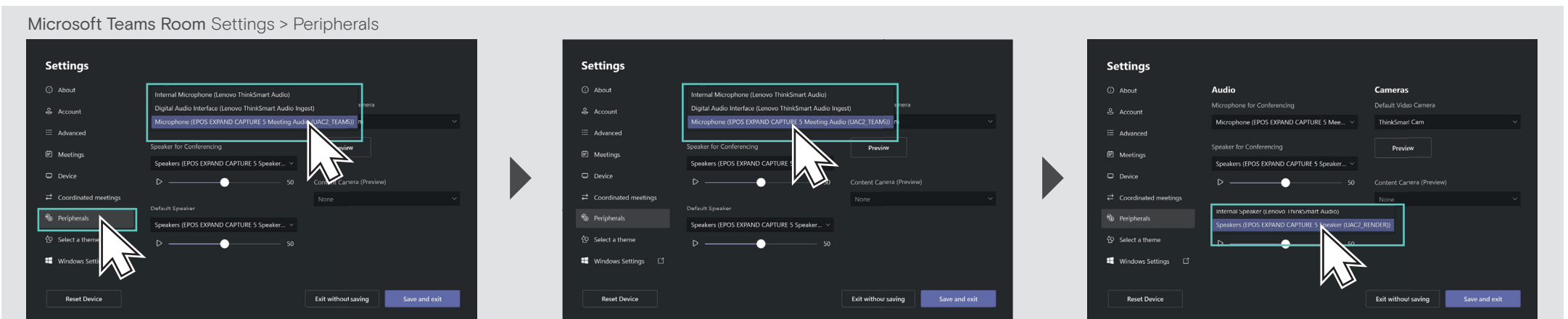




Configure Lenovo ThinkSmart Core | Configuration du Lenovo ThinkSmart Core | Lenovo ThinkSmart Core konfigurieren | Configuración de Lenovo ThinkSmart Core | Configurazione di Lenovo ThinkSmart Core



Select EPOS EXPAND Capture 5 as Default Audio Peripheral | Sélectionnez EPOS EXPAND Capture 5 comme périphérique audio par défaut | EPOS EXPAND Capture 5 als Standard-Audioperipheriegerät auswählen | Selección de EPOS EXPAND Capture 5 como periférico de audio predeterminado | Selezionare EPOS EXPAND Capture 5 come periferica audio predefinita



Select EPOS EXPAND Capture 5 as Default Microphone and Speaker. Verify EPOS Capture 5 has been recognized by the conferencing application.
 Sélectionner EPOS EXPAND Capture 5 comme micro et speaker par défaut. Vérifier que le speaker EPOS Capture 5 a été détecté par l'application de conférence.
 Wählen Sie EPOS EXPAND Capture 5 als Standardmikrofon und -lautsprecher. Überprüfen Sie, ob EPOS Capture 5 von der Konferenzanwendung erkannt wurde.
 Seleccionar EPOS EXPAND Capture 5 como micrófono y altavoz predeterminados. Comprobar que la aplicación de conferencia haya reconocido el dispositivo EPOS Capture 5.
 Selezionare EPOS EXPAND Capture 5 come microfono e altoparlante predefiniti. Verificare che EPOS Capture 5 sia stato riconosciuto dall'applicazione per conferenze.